

PTZ Wall Mount

The Avteq PTZ Wall Mount supports any PTZ camera with a 1/4"-20 interface. The mount is designed to install directly to a wall or a single-gang wall box and position the camera above or below a display. The camera mount is made from heavy gauge steel and can support up to 20 lbs.

COMPATIBILITY

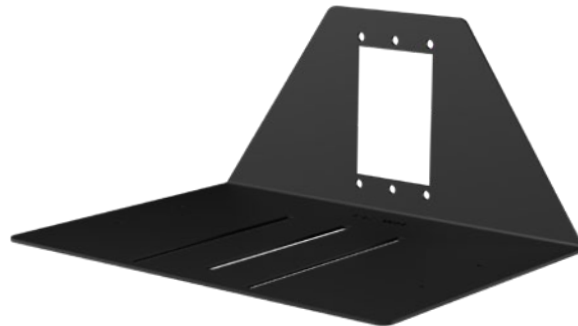
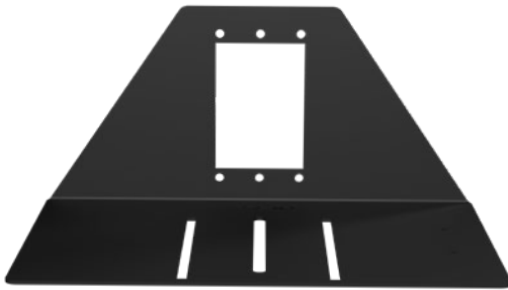
- Most small based SONY, Panasonic, Cisco, Polycom, Vaddio, etc. cameras with a 1/4-20 mounting hole.

FEATURES

- Positions camera above or below a display
- Mounts directly to drywall
- Hardware included to secure camera to mount
- Supports up to 20 lbs.
- Black powder-coat finish
- 100% solid steel construction
- TAA-compliant

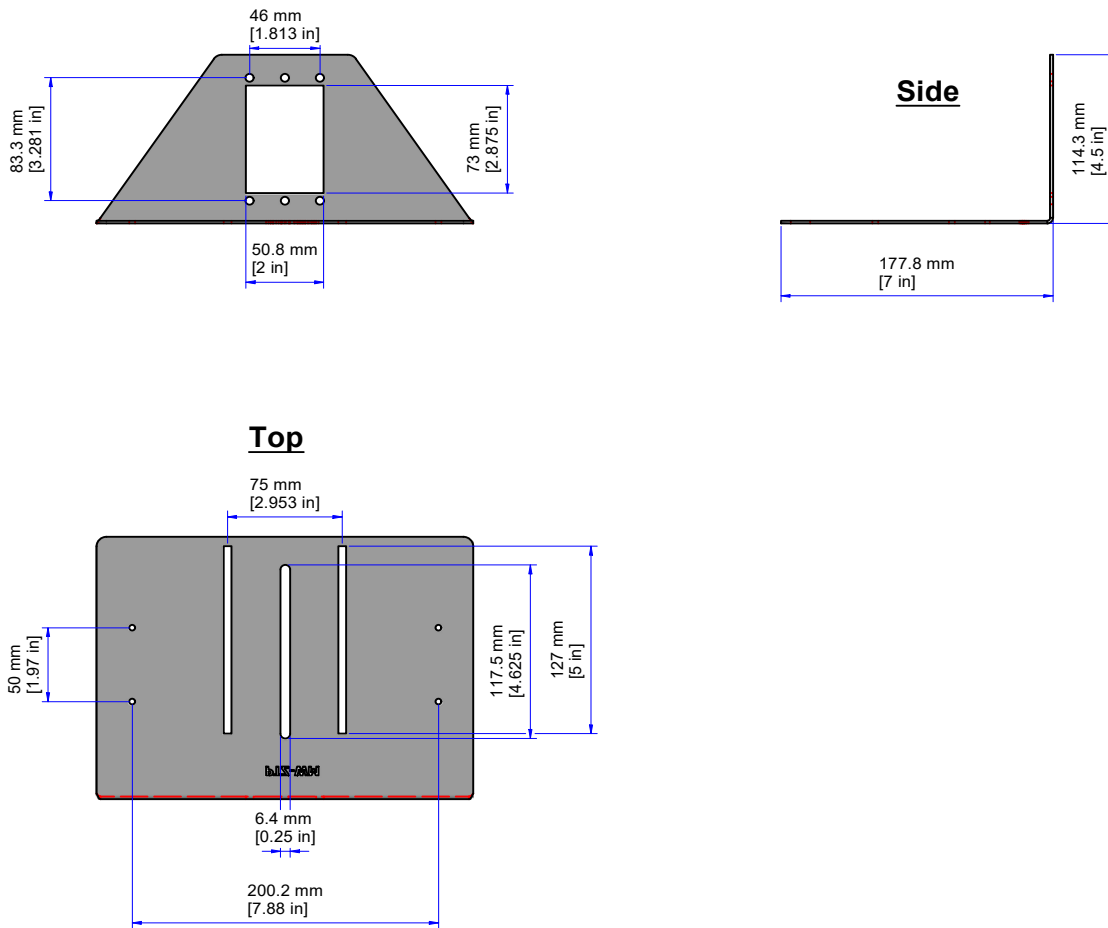


PTZ Wall Mount



PTZ Wall Mount

DIMENSIONS



SPECIFICATIONS

Part Number	PTZ-WM
Dimensions (HxWxD)	4.5 x 9.7 x 7 Inches (114.3 x 246.38 x 177.8 mm)



Call 800.285.8315 or visit AVTEQ.net